



**Fitting Instructions for RAD222BK Radiator Guard**  
**HONDA X-ADV '17-**



**In This Kit There Should Be**  
**1x Radiator Guard (RAD0222BK)**  
**2x Spacers (S0275 – 4.5mm Long)**  
**2x M5 x 30mm Long Button Head Bolts**  
**2x M5 Washers**  
**1x Cable Tie**  
**3x 100mm Lengths of self-adhesive Foam**



Picture 1



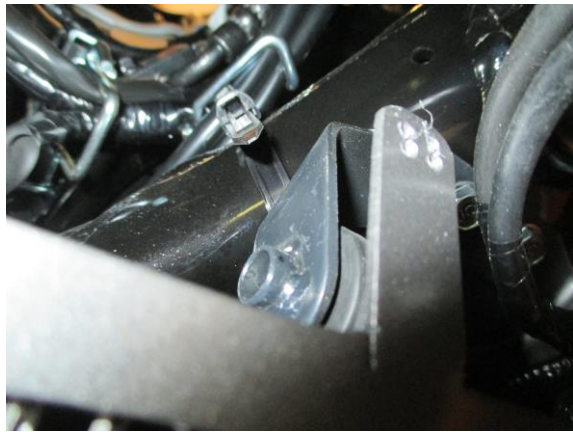
Picture 2



Picture 3



Picture 4



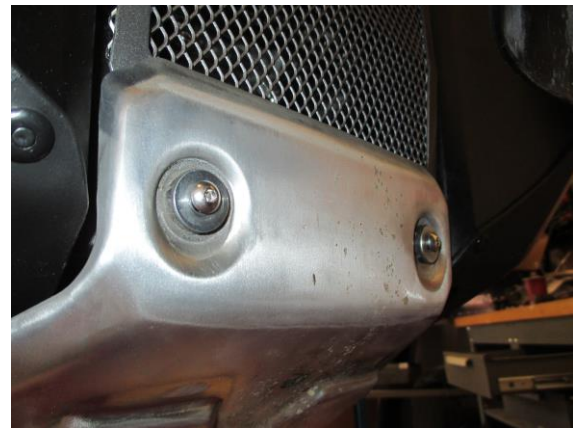
Picture 5



Picture 6



Picture 7



Picture 8



### **TOOLS REQUIRED**

- Socket set to include 10mm socket & wrench.
  - 3 & 4mm Allen keys.
  - Cable cutters.

### **FITTING INSTRUCTIONS**

- Remove the four bolts that secure the OEM bash plate in place and remove from the bike, as shown in picture 1.
- Push the two top hat spacers out of the front two rubber mounts and re-position into the rubber mounts from the reverse direction, as shown in picture 2.
- Loosen the top mounting bolt for the radiator on the left side of the bike, as shown in picture 3. Slacken this off so there is a 2-3mm gap behind the head of the bolt to insert the radiator guard mount.
- To fit the radiator guard to the bike cut the foam strip provided into 10mm wide pieces and stick them to the back of the radiator guard frame, so that they sit between the radiator guard and the radiator.
- Offer the R&G Radiator Guard into position, ensuring the top left mount sits between the mount and head of bolt on the top left corner, as shown in picture 4.
- The top right should align with the bracket shown in picture 5, which a cable tie can be looped around to secure in place.
- Ensure the radiator guard is correctly fitted and locates behind the plastic half way down, as shown in picture 6.
- The lower mounts should align with the two lower mounting holes. Re-fit the bashplate, along with the two M6 button head bolts supplied, ensuring the two spacers supplied sit between the bashplate and radiator guard mounts, as shown in pictures 7 & 8.
- Re-fit the remaining two OEM bashplate bolts and fully tighten.
- Tighten all bolts evenly and ensure the radiator is correctly mounted.

ISSUE 2 06/11/2017 (AR)

### **CONSUMER NOTICE**

The catalogue description and any exhibition of samples are only broad indications of the Products and R&G may make design changes which do not diminish their performance or visual appeal and supplying them in such state shall conform to the order. The Buyer acknowledges no representation or warranty (other than as to title) has been given or will apply to the Products other than those in R&G's order or confirmation and the Buyer confirms it has chosen the Products as being of merchantable quality and suitable for its particular purposes. Where R&G fits the Products or undertakes other services it shall exercise reasonable skill and care and rectify any fault free of charge unless the workmanship has been disturbed. The Buyer is responsible for ensuring that the warranty on the motorcycle is not affected by the fitting of the Products. On return of any defective Products R&G shall at its option either supply a replacement or refund the purchase money but shall not be liable if the Products have been modified or used or maintained otherwise than in accordance with R&G's or manufacturer's instructions and good engineering practice or if the defect arises from accident or neglect. Other than identified above and subject to R&G not limiting its liability for causing death and personal injury, it shall not be liable for indirect or consequential loss and otherwise its liability shall be limited to the amounts paid by the Buyer for the Products or the fitting or service concerned. These terms do not affect the Buyer's statutory rights.

### **R&G RACING RETURNS POLICY (NON-FAULTY GOODS)**

Returns must be pre-authorized (if not pre-authorized the return will be rejected). Goods may only be returned direct to us if they were purchased direct from us (customer must prove if necessary). Otherwise to be returned to original vendor. Goods must be in re-sellable condition, in the opinion of R&G Racing. All returns are subject to a 25% restocking and handling fee (25% of the gross value exc. P&P – at the prevailing price at time of purchase). The customer must pay any and all carriage charges. No returns of discontinued products, unless within 14 days of purchase. This policy does not affect your statutory rights and does not refer to faulty goods.

R&G Racing

Unit 1, Shelley's Lane, East Worldham, Alton, Hampshire, GU34 3AQ

Tel: +44 (0)1420 89007 Fax: +44 (0)1420 87301 [www.rg-racing.com](http://www.rg-racing.com) Email: [info@rg-racing.com](mailto:info@rg-racing.com)



**NOTICE DE MONTAGE POUR RAD222BK**  
**GRILLE DE PROTECTION RADIATEUR**  
**HONDA X-ADV '17-**



**Le kit doit contenir :**

- 1 x Grille de protection radiateur (RAD0222BK)
- 2x Entretoises (S0275 – 4.5mm de long)
- 2x M5 x 30mm Boulons
- 2x M5 Rondelles
- 1x Collier de serrage
- 3x 100mm Longueurs de mousse autocollante.



Photo 1



Photo 2



Photo 3



Photo 4

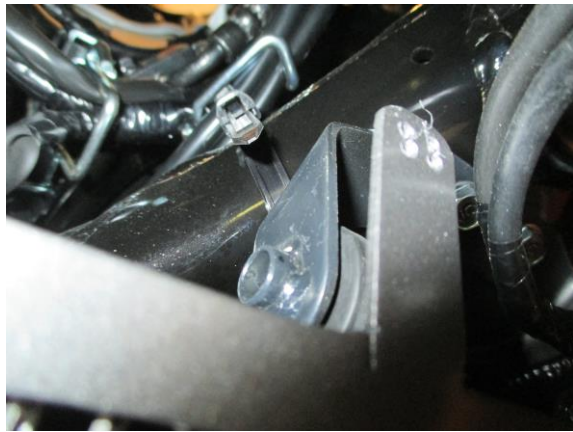


Photo 5



Photo 6



Photo 7



Photo 8



### **OUTILS REQUIS**

- Clé à cliquet + douille 10mm.
- Clés Allen 3 & 4mm.
- Coupe câble.

### **NOTICE DE MONTAGE:**

- Enlever les 4 boulons qui fixent la plaque de protection d'origine en place puis enlevez la de la moto, voir photo 1.
- Extraire les 2 entretoises en dehors des 2 supports en caoutchouc avant, voir photo 2.
- Dévisser le boulon de fixation supérieur de radiateur du côté gauche de la moto, voir photo 3. Dévisser de façon à avoir un espace de 2-3mm derrière la tête du boulon pour insérer le support de protection radiateur.
- Couper le bandeau de mousse fourni en pièces de 10mm puis collez-les au bas du cadre de protection radiateur, de façon à ce qu'elles se placent entre la protection radiateur et le radiateur.
- Monter la grille de protection R&G en position, en veillant à ce que le support supérieur gauche se place entre le support et la tête du boulon sur le coin supérieur gauche, voir photo 4.
- Le coin droit doit s'aligner avec le support indiqué sur la photo 5, qu'un collier peut encercler pour fixer en place.
- Veiller à ce que la grille de protection radiateur soit correctement montées puis placez là-derrrière la moitié inférieure, voir photo 6.
- Les supports inférieurs doivent s'aligner avec les 2 trous de fixation inférieurs. Remonter la plaque de protection, ainsi que les 2 boulons M6 fournis, en veillant à ce que les 2 entretoises, fournies se placent entre la plaque de protection et les supports de grille de protection radiateur, voir photos 7 & 8.
- Réinsérer les 2 boulons de plaque de protection d'origine restants puis serrer.
- Serrer tous les boulons de façon égale puis veiller à ce que le radiateur soit correctement monté.

ISSUE 1 20/09/2017 (AR)

### **CONSUMER NOTICE**

The catalogue description and any exhibition of samples are only broad indications of the Products and R&G may make design changes which do not diminish their performance or visual appeal and supplying them in such state shall conform to the order. The Buyer acknowledges no representation or warranty (other than as to title) has been given or will apply to the Products other than those in R&G's order or confirmation and the Buyer confirms it has chosen the Products as being of merchantable quality and suitable for its particular purposes. Where R&G fits the Products or undertakes other services it shall exercise reasonable skill and care and rectify any fault free of charge unless the workmanship has been disturbed. The Buyer is responsible for ensuring that the warranty on the motorcycle is not affected by the fitting of the Products. On return of any defective Products R&G shall at its option either supply a replacement or refund the purchase money but shall not be liable if the Products have been modified or used or maintained otherwise than in accordance with R&G's or manufacturer's instructions and good engineering practice or if the defect arises from accident or neglect. Other than identified above and subject to R&G not limiting its liability for causing death and personal injury, it shall not be liable for indirect or consequential loss and otherwise its liability shall be limited to the amounts paid by the Buyer for the Products or the fitting or service concerned. These terms do not affect the Buyer's statutory rights.

### **R&G RACING RETURNS POLICY (NON-FAULTY GOODS)**

Returns must be pre-authorized (if not pre-authorized the return will be rejected). Goods may only be returned direct to us if they were purchased direct from us (customer must prove if necessary). Otherwise to be returned to original vendor. Goods must be in re-sellable condition, in the opinion of R&G Racing. All returns are subject to a 25% restocking and handling fee (25% of the gross value exc. P&P – at the prevailing price at time of purchase). The customer must pay any and all carriage charges. No returns of discontinued products, unless within 14 days of purchase. This policy does not affect your statutory rights and does not refer to faulty goods.

R&G Racing

Unit 1, Shelley's Lane, East Worldham, Alton, Hampshire, GU34 3AQ

Tel: +44 (0)1420 89007 Fax: +44 (0)1420 87301 [www.rg-racing.com](http://www.rg-racing.com) Email: [info@rg-racing.com](mailto:info@rg-racing.com)



**Montageanleitung für den RAD222BK Kühlerschutz**  
**HONDA X-ADV '17-**



**Dieser Kit beinhaltet:**  
1x Kühlerschutz (RAD022BK)  
2x Distanzhalter (S0275 – 4,5mm Länge)  
2x M5 x 30mm Inbusschrauben  
2x M5 Unterlegscheiben  
1x Kabelbinder  
3x 100mm selbstklebender Schaumstoffstreifen



Abbildung 1



Abbildung 2



Abbildung 3

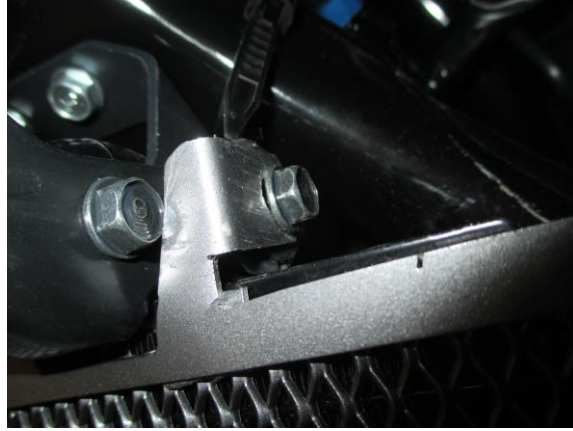


Abbildung 4

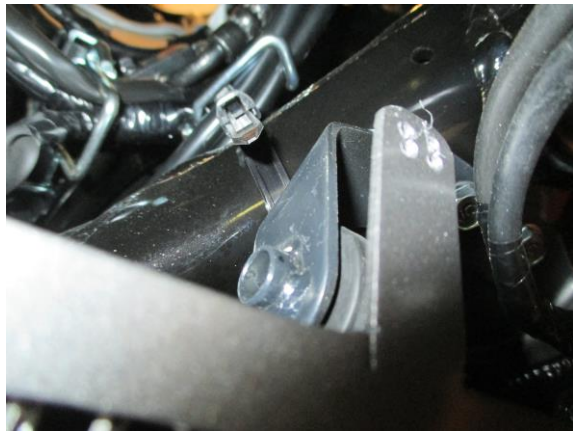


Abbildung 5



Abbildung 6



Abbildung 7

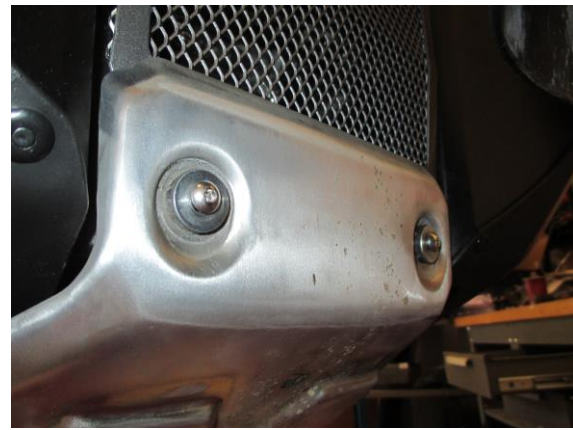


Abbildung 8





### **SIE BENÖTIGEN FOLGENDES WERKZEUG:**

- Steckschlüssel-Satz mit einem 10 mm Steckschlüssel
  - 3 & 4 mm Inbusschlüssel
  - Seitenschneider

### **MONTAGEANLEITUNG**

- Entfernen Sie die vier Schrauben, die die Metallschutzplatte in Position befestigen und diese vom Motorrad entfernen – siehe Abbildung 1.
- Die zwei zylinderförmige Distanzhalter aus den vorderen Gummihalterungen drücken und von der entgegengesetzten Richtung in den Gummihalterungen neu positionieren - siehe Abbildung 2.
- Lösen Sie die obere Montageschraube für den Kühler an der linken Seite des Motorrads wie in Abbildung 3 abgebildet. Diese etwas lockern, so dass ein 2-3mm Spalt hinter dem Schraubenkopf entsteht, um die Kühlschutzhalterung einsetzen zu können.
- Um den Kühlerschutz am Motorrad zu montieren, schneiden Sie zuerst die mitgelieferten Schaumstoff-Streifen in 10 mm breite Streifen und kleben Sie diese auf der Rückseite des Kühlerschutzrahmens, so dass sie zwischen dem Kühlerschutz und dem Kühler angebracht sind.
- Den R&G Kühlerschutz in Position bringen – bitte darauf achten, dass die obere linke Halterung zwischen der Halterung und dem Schraubenkopf an der oberen linken Ecke fixiert ist – siehe Abbildung 4.
- Oben links sollte nun mit der Halterung bündig sein – siehe Abbildung 5. Einen Kabelbinder anbringen, um dies in Position zu befestigen.
- Stellen Sie sicher, dass der Kühlerschutz ordnungsgemäß montiert ist und hinter dem Kunststoff auf halber Höhe positioniert ist – siehe Abbildung 6.
- Die unteren Halterungen sollten bündig sein mit den zwei unteren Montageöffnungen. Montieren Sie die Metallschutzplatte wieder – benutzen Sie die zwei M6 6 Inbusschrauben vom Kit und achten Sie darauf, dass die zwei mitgelieferten Distanzhalter zwischen der Metallschutzplatte und Kühlerschutzhalterungen montiert sind, wie in den Abbildungen 7 & 8 abgebildet.
- Montieren Sie die zwei original Schrauben für die Metallschutzplatte wieder und ziehen Sie sie fest.
- Ziehen Sie alle Schraube gleichmäßig fest und überprüfen Sie, dass der Kühlerschutz ordnungsgemäß montiert ist.

AUSGABE 1 20/09/2017 (AR)

#### **CONSUMER NOTICE**

The catalogue description and any exhibition of samples are only broad indications of the Products and R&G may make design changes which do not diminish their performance or visual appeal and supplying them in such state shall conform to the order. The Buyer acknowledges no representation or warranty (other than as to title) has been given or will apply to the Products other than those in R&G's order or confirmation and the Buyer confirms it has chosen the Products as being of merchantable quality and suitable for its particular purposes. Where R&G fits the Products or undertakes other services it shall exercise reasonable skill and care and rectify any fault free of charge unless the workmanship has been disturbed. The Buyer is responsible for ensuring that the warranty on the motorcycle is not affected by the fitting of the Products. On return of any defective Products R&G shall at its option either supply a replacement or refund the purchase money but shall not be liable if the Products have been modified or used or maintained otherwise than in accordance with R&G's or manufacturer's instructions and good engineering practice or if the defect arises from accident or neglect. Other than identified above and subject to R&G not limiting its liability for causing death and personal injury, it shall not be liable for indirect or consequential loss and otherwise its liability shall be limited to the amounts paid by the Buyer for the Products or the fitting or service concerned. These terms do not affect the Buyer's statutory rights.

#### **R&G RACING RETURNS POLICY (NON-FAULTY GOODS)**

Returns must be pre-authorized (if not pre-authorized the return will be rejected). Goods may only be returned direct to us if they were purchased direct from us (customer must prove if necessary). Otherwise to be returned to original vendor. Goods must be in re-sellable condition, in the opinion of R&G Racing. All returns are subject to a 25% restocking and handling fee (25% of the gross value exc. P&P – at the prevailing price at time of purchase). The customer must pay any and all carriage charges. No returns of discontinued products, unless within 14 days of purchase. This policy does not affect your statutory rights and does not refer to faulty goods.

R&G Racing

Unit 1, Shelley's Lane, East Worldham, Alton, Hampshire, GU34 3AQ

Tel: +44 (0)1420 89007 Fax: +44 (0)1420 87301 [www.rg-racing.com](http://www.rg-racing.com) Email: [info@rg-racing.com](mailto:info@rg-racing.com)